

# ULTRA THIN NATURAL MARBLE

THERE IS A LOVE CALLED LEADING EXPLORING AND THINKING

Royal Luxe Marble

ULTRA THIN NATURAL MARBLE BRAND ALBUM

# Ultra-Thin Natural Marble

Ultrathin stone slabs revolutionize the traditional perception of marble, evolving from a "light" definition towards a "thin" development, endowing marble with a more diverse and dazzling vitality. We firmly believe that only through focus can we create products that withstand the test of time.

- Beautiful aspirations •
- Gathering the essence of nature •
- Embracing the principle of non-action in nature •



# BRAND STORY

Thinning the matter of light years, from stone to stone material, humans have gone through millions, from 3 millimeters to 0.5 millimeters, from small specifications to large panels, after seven years, with China's intelligent manufacturing as the carrier, and with the expansion of the application surface of natural stone as its mission. Adhering to the craftsmanship spirit, through a hundred thousand hammerings, forging ahead, ultimately making the stone as thin as a cicada's wing, dancing lightly, truly natural, originating from nature, stone~ the Earth mother's nurturing for millions of years, can be called precious stone. Ultra-thin natural precious stone, with the quality of diamonds, with the weight of carats, flexible, light, going global, going to you~ Italy, Spain, Dubai, Abu Dhabi, Greece Germany, Turkey, the Netherlands, the United States. Applied to~ Apple phone cases, car interiors, refrigerators, air conditioner decorative surfaces, furniture decorative surfaces, door body decorative surfaces, ceiling, arc spiral staircase, columns, kitchen cabinet panels, elevators, artistic background walls seamless full decoration, walls, floors, old houses new renovation..... Ultra-thin natural precious stone, can be bent, can be shaped, the beauty of nature, relentlessly pursued, ultra-thin precious stone nurturing light years, integrated into life. With ultra-thin, ultra-light, green energy-saving, empowering products, adding value to brands, five carats sincere, trustworthy, precise, perfect, continuing the stone age; thin stone material, thick world.

- Craftsmanship refinement
- Originality in the trade
- Creation of objects, flow of forms



# ENTERPRISE VISION

## Continuously creating professional value

Ultra-thin (Technology) Stone Industry Development Co., Ltd. adheres to the principle of "integrity, trust, precision, and perfection", and has established a good reputation and reputation in the domestic and international stone industry. In the fierce competition, it has further grown and expanded, undertaking and completing hundreds of key projects such as the Huaxia Bank in Pudong, Shanghai, the Xiangmei Garden in Pudong, Shanghai, the China Fiscal Museum at the Meilun Grand Hotel, the Office Building of Beijing Guodian Group, the Zhonglian Building in Beijing, and the Qianxin Greenland in Hangzhou. The continuity and stability of product quality have been highly praised by customers. In addition, our company is not content with the existing product lines and continues to develop and innovate within this product field. At the beginning of 2019, the Ultra-thin Stone Home Application Gallery was established at the headquarters in Fujian, and the same year, a designer material selection center was set up in Dongguan, Guangdong, to more comprehensively cover the international market with ultra-thin stone materials.

- Luxurious and preciousness ▪
- The pen is extremely gorgeous ▪
- It turns out to plain ▪

Material innovation

The birth of ultra-thin natural marble

It offers more diverse possibilities for home aesthetic design

## What is ultra-thin stone ?

A new material product that retains the texture and grain of natural stone has not only been frequently used in many domestic and international cases in recent years ,but has also made a prominent appearance at major design industry exhibitions. Products of this kind are collectively referred to as "ultra-thin stone."



## ULTRA THIN NATURAL MARBLE

Bendable 0.5 mm - 5mm

New Materials | New Concepts | New Choices

# Ultra-thin stone core characteristics

CORE CHARACTERISTIC



## Natural

The texture and color of the raw stone  
Not copyable

## Light and thin

Convenient transportation, easy installation  
Significantly reduce overall cost

## Strong and flexible

Installation and transportation without damage  
Satisfy the surface modeling decoration requirements

## Light transmission

Endow stone with temperature  
Let the light possess texture

# Natural Thin Stone Application Plate

THIN  
STONE  
APPLICATION PLATE

Decoration | Home  
Furnishing | Cultural and  
Creative Industry

One Arc To The End



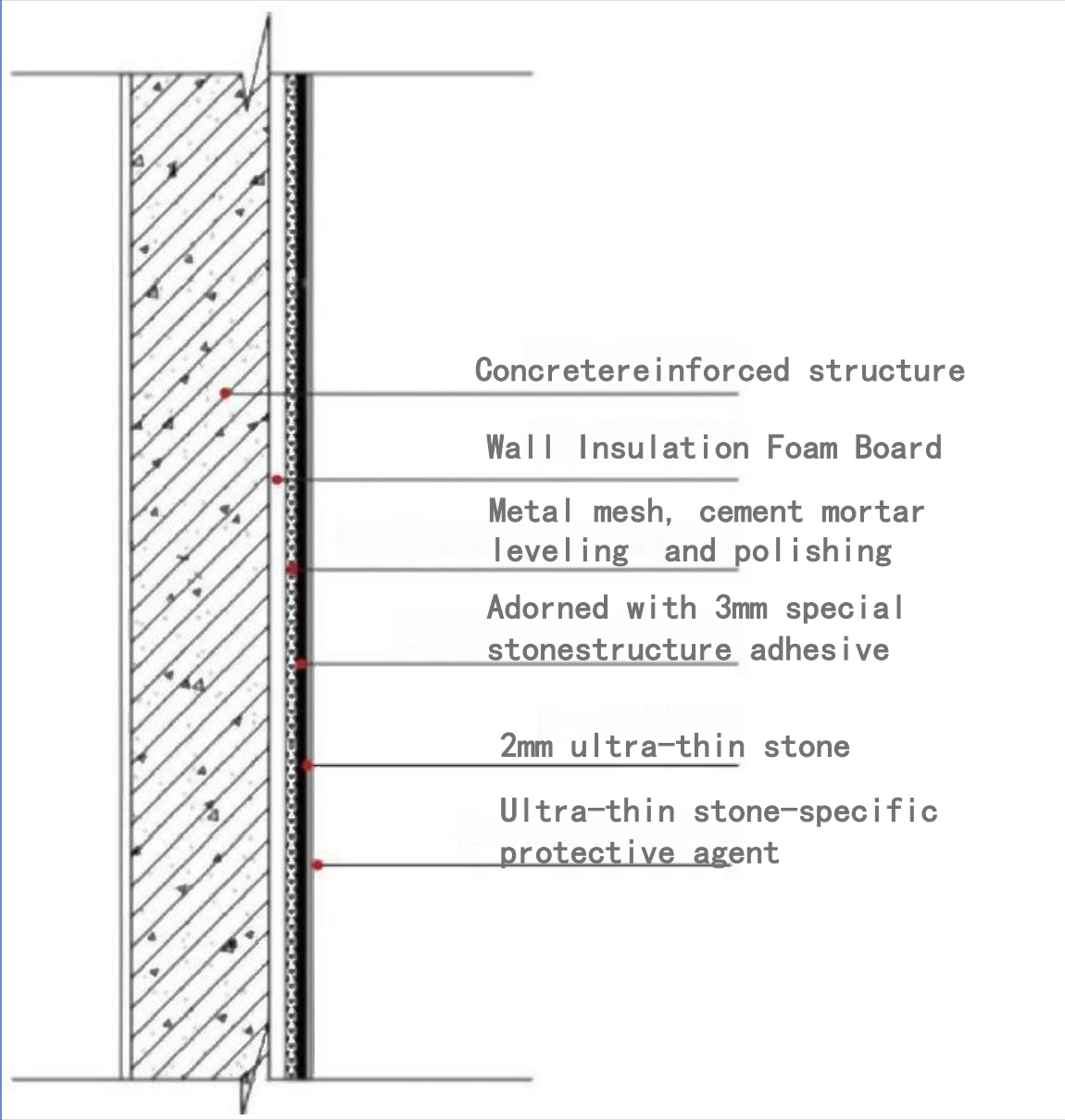
# “Decoration”

FOR YOUR SATISFACTION – KEEP VOWING NOT TO STOP

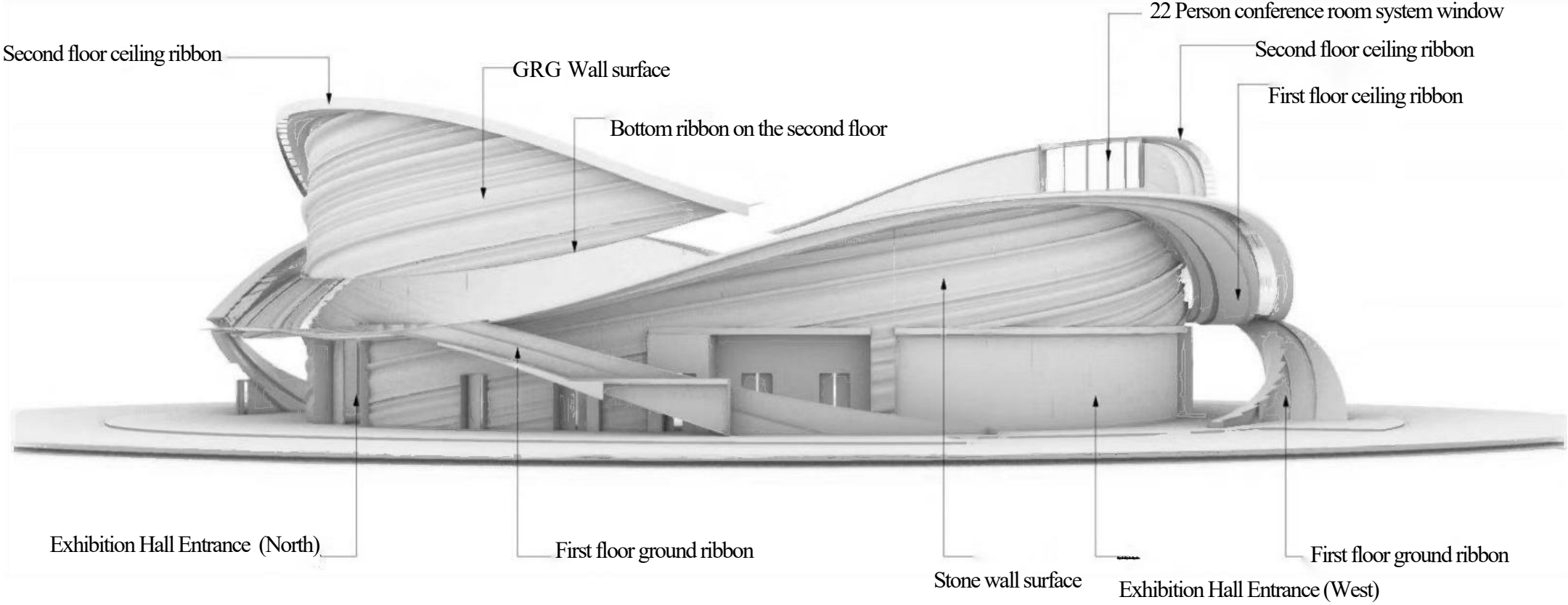
1mm(1600 mm\*3200mm)2.8kg/m<sup>2</sup> 3mm(2000mm\*3200mm)7.5kg/m<sup>2</sup> 5mm(2000mm\*3200mm)12kg/m<sup>2</sup>

# Ultra-thin stone exterior wall construction node diagram

## OUTDOOR WALL NODE DIAGRAM

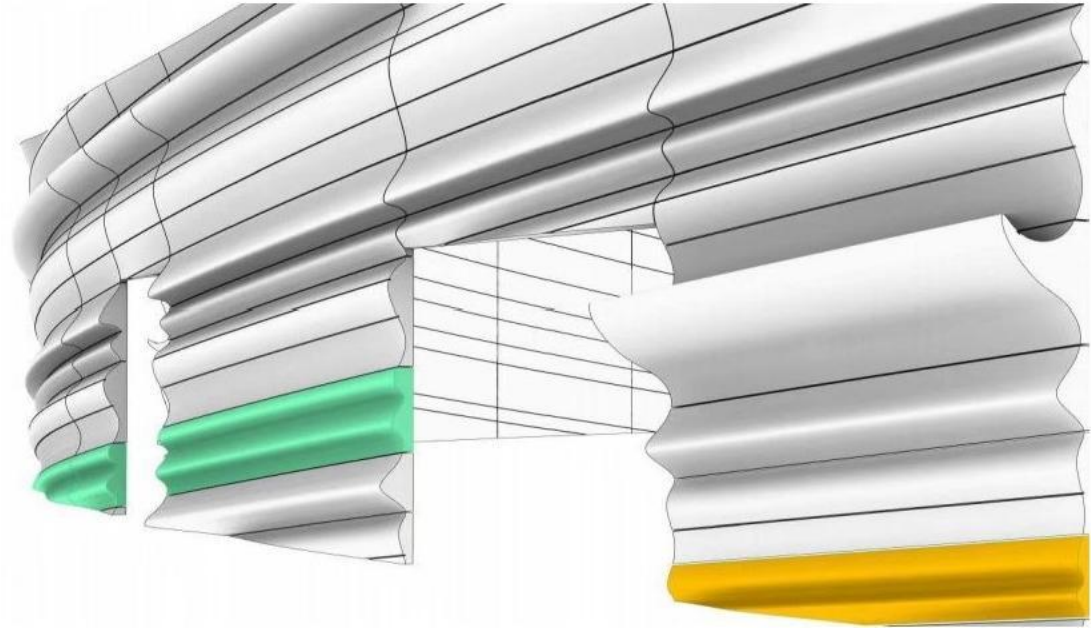
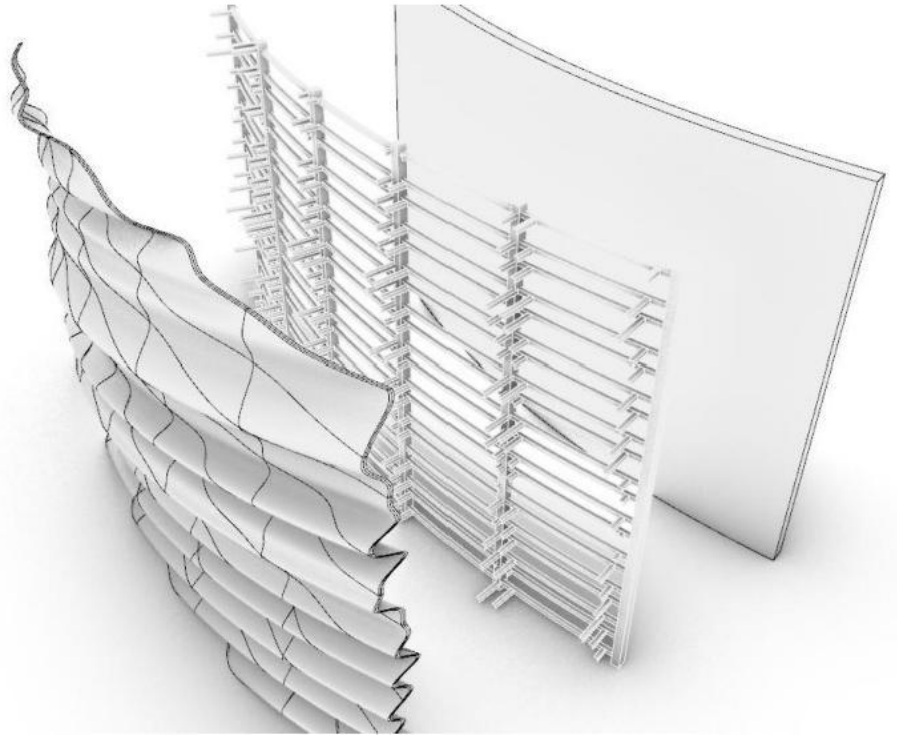


Case Analysis    Shanghai Xuhui Project





# Case Analysis Shanghai Xuhui Project



# Case Analysis    Shanghai Xuhui Project



# TRADITIONAL MARBLE vs ULTRA THIN MARBLE

(Cost Analysis)

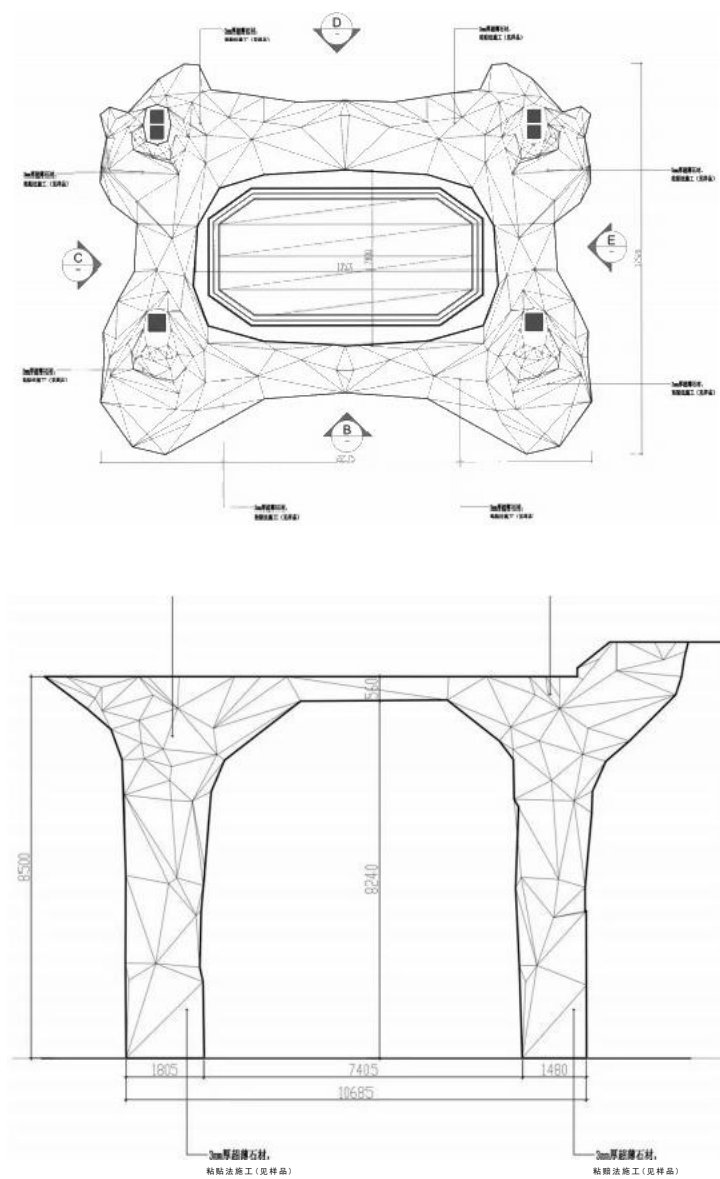
Traditional rough stone module price analysis									Ultra-thin stone module price analysis								
Category	SIZE	UNIT	PRICE (CNY) /m <sup>1</sup>	Quantity / item	Single item cost	Processing fee *2500/m <sup>1</sup>	Freight cost/item	Comprehensive unit price	Category	SIZE	UNIT	PRICE (CNY) /m <sup>1</sup>	Quantity / item	Single item cost	Processing fee	Freight cost/m <sup>1</sup>	Comprehensive unit price
Module A	810*530*590	mm	¥10000	0.2533	¥2533.00	¥3400.00	¥160.00	¥6093.00	Module A	810*530*590	mm	¥10000	1	¥3975.00		¥220/m <sup>3</sup>	¥4373.00
Module B	810*760*150	mm	¥10000	0.0923	¥923.00	¥2250.00	¥71.00	¥3890.00	Module B	810*760*150	mm	¥10000	1	¥2795.00		¥220/m <sup>3</sup>	¥2835.00

- Note:
1. Freight cost for the transportation of rough stone modules to the destination is approximately 320 per ton.
  2. The transportation cost of thin stone modules to the destination is approximately 220 per cubic meter, and the comprehensive transportation cost is about 30% less than that of raw material modules.
  3. The cost of secondary transportation and unloading of thin stone modules at the construction site is low.

Traditional rough stone materials/ Ultra-thin stone material modules comprehensive cost comparison													
Project Name	rough stone module	Ultra-thin stone module	Price difference	Price difference ratio			Project Name	rough stone module	Ultra-thin stone module	Price difference	Price difference ratio		
Price of finished product in Section A	¥6093/item	¥4433/item	¥1660	28%			Price of finished product in Section B	¥3890/item	¥2855/item	¥1035	27%		
Transportation costs	¥160/item	¥60/item	¥100	62%			Transportation costs	¥71/item	¥20/item	¥51	72%		
Keel fabrication and cleaning work	¥760/m <sup>2</sup>	¥400/m <sup>2</sup>	¥360	47%			Keel fabrication and cleaning work	¥760/m <sup>2</sup>	¥400/m <sup>2</sup>	¥360	47%		
Installation loss	5%	0	5%	5%			Installation loss	5%	0	5%	5%		
Machine usage fee	¥2800/each	¥350/each	¥2450	88%			Machine usage fee	¥2800/each	¥350/each	¥2450	88%		
Value-Added Tax on Finished Products	¥640/item	¥465/item	¥175	27%			Value-Added Tax on Finished Products	¥408/item	¥300/item	¥108/item	27%		

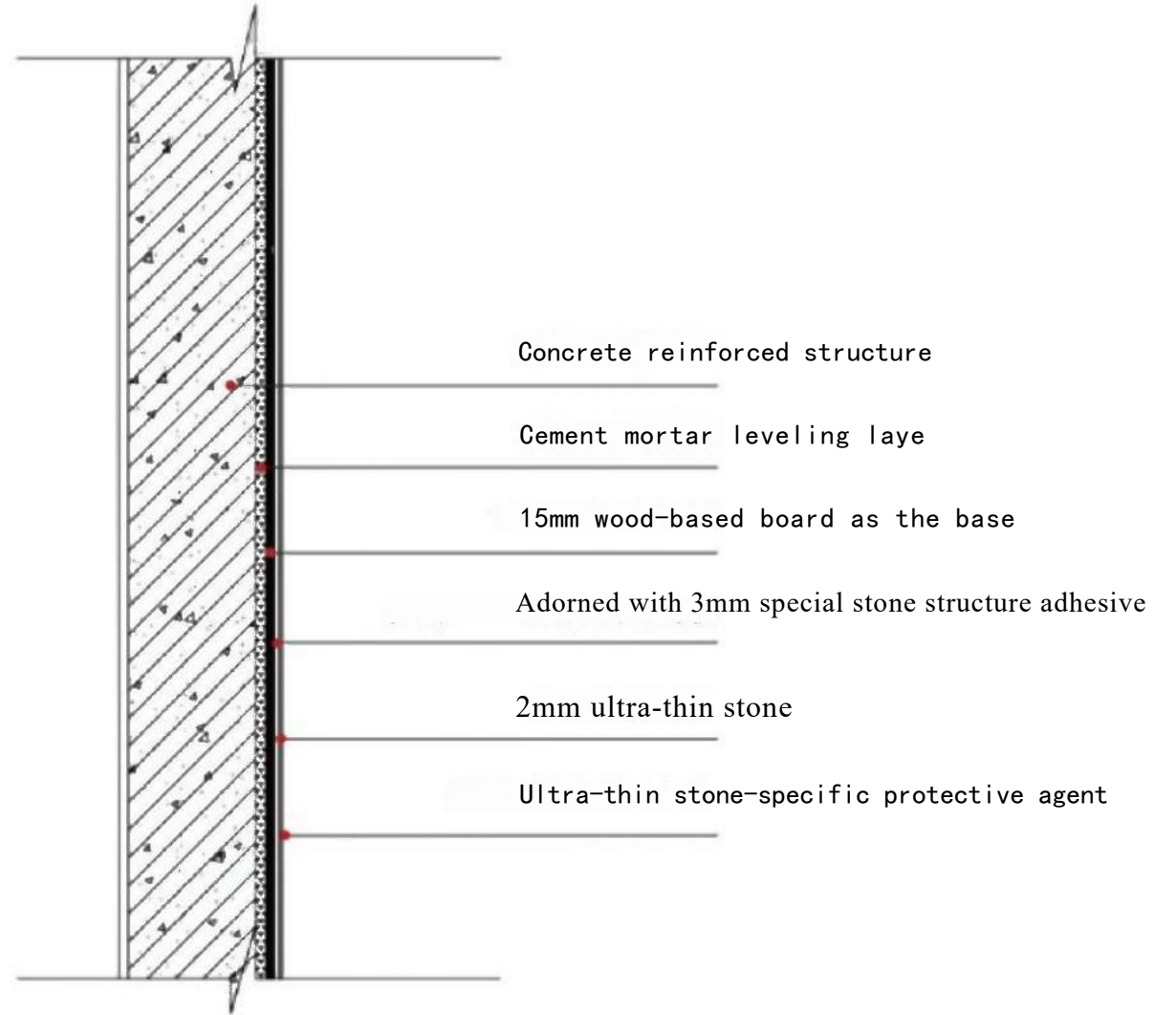


# Case Analysis Taizhou Swan Lake Hotel



# Ultra-thin stone interior wall construction node diagram

## INDOOR WALL NODE DIAGRAM





# Case Analysis Taizhou Swan Lake Hotel





# Case Analysis Taizhou Swan Lake Hotel



# TRADITIONAL MARBLE vs ULTRA THIN MARBLE

(Cost Analysis)

Number	Material Name	Unit	18mm large panel	18mm Finished product price	Ultra-thin finished stone products (2-5mm)	Ultra-thin finished stone product (1mm)	Price difference ratio %
1	Marble White	m <sup>2</sup>	1200	¥2060	1695	1995	10.00%
2	Fendi White	m <sup>2</sup>	2800	¥4660	3695	3995	17.00%
3	Fish belly white	m <sup>2</sup>	8800	¥14600	9995	10295	30.00%
4	Amazon Green	m <sup>2</sup>	12000	¥19900	13595	13895	32.00%











Décoration plate



Decoration plate









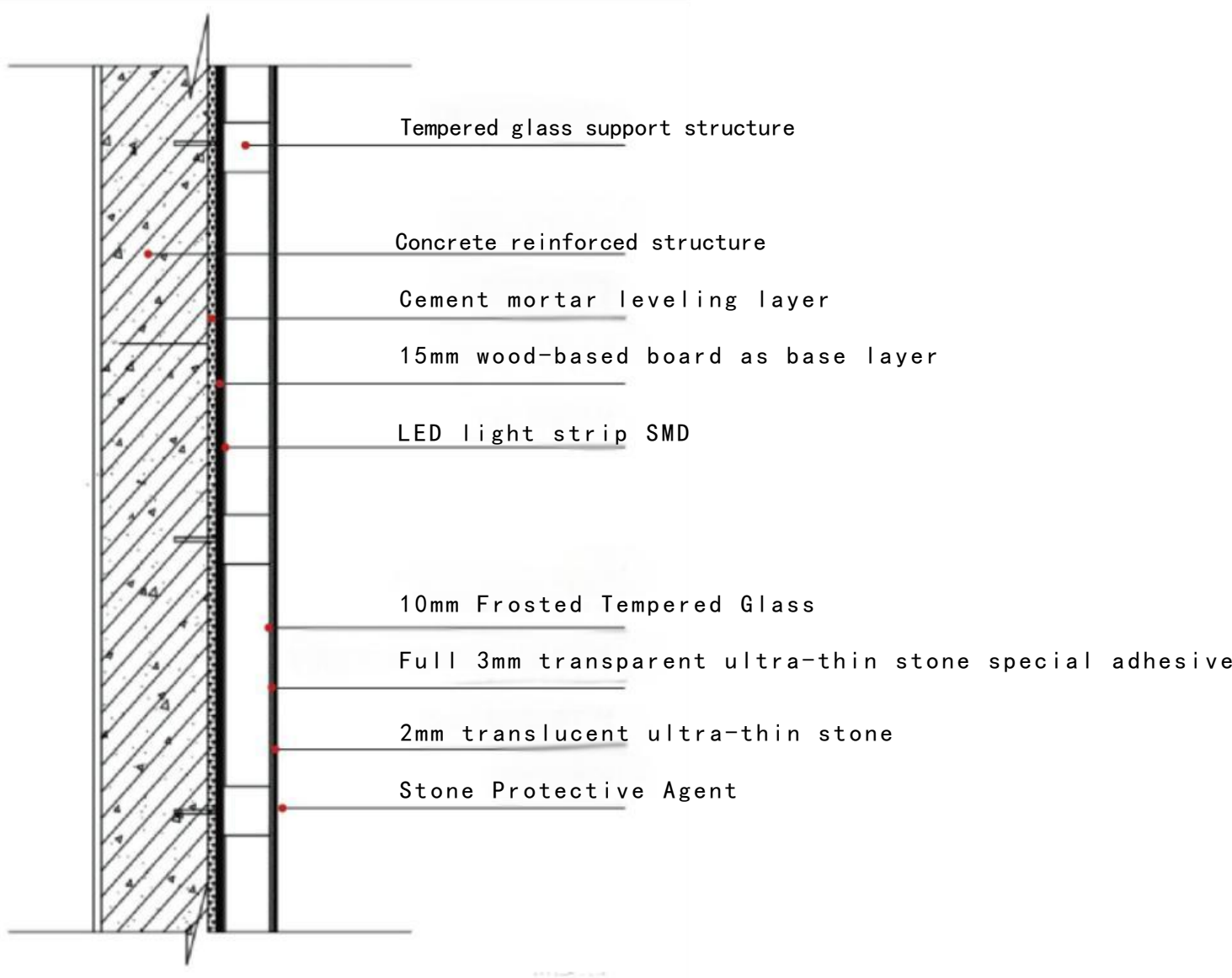






# Ultra-thin stone light-transmitting wall construction node diagram

## PHOTIC WALL NODE DIAGRAM





# Case Analysis    Macau Apple Flagship Store



# “Home Furnishing”

## CLASSIC AND UNIQUE – LEAN COLLECTION

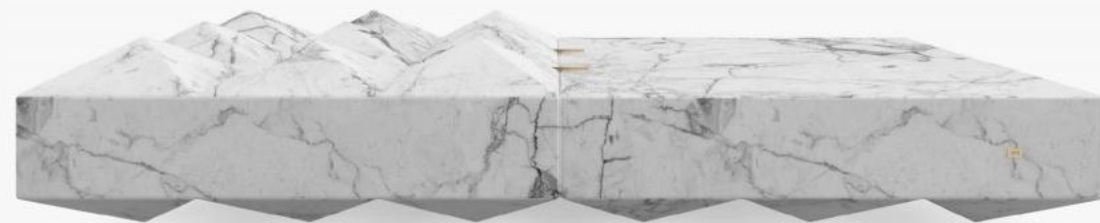
1mm(1600mm\*3200mm)2.8kg/m<sup>2</sup> 3mm(2000mm\*3200mm)7.5kg/m<sup>2</sup> 5mm(2000mm\*3200mm)12kg/m







Home furnishing sector







Home furnishing sector



# ROMANTIC



*Chunlu Cabinet*

1mm-5mm Natural Marble

# FRESHEN



*Mesa Glass Table*

1mm-5mm Natural Marble

# PERSONALITY



*Darius Coffee Table*

1mm-5mm Natural Marble

# PERSONALITY



*Grayson Coffee Table*

1mm-5mm Natural Marble

# “Cultural and Creative Industry”

RECRUITING NEW TALENTS – MELTING INTO REFINED CRAFTSMAN

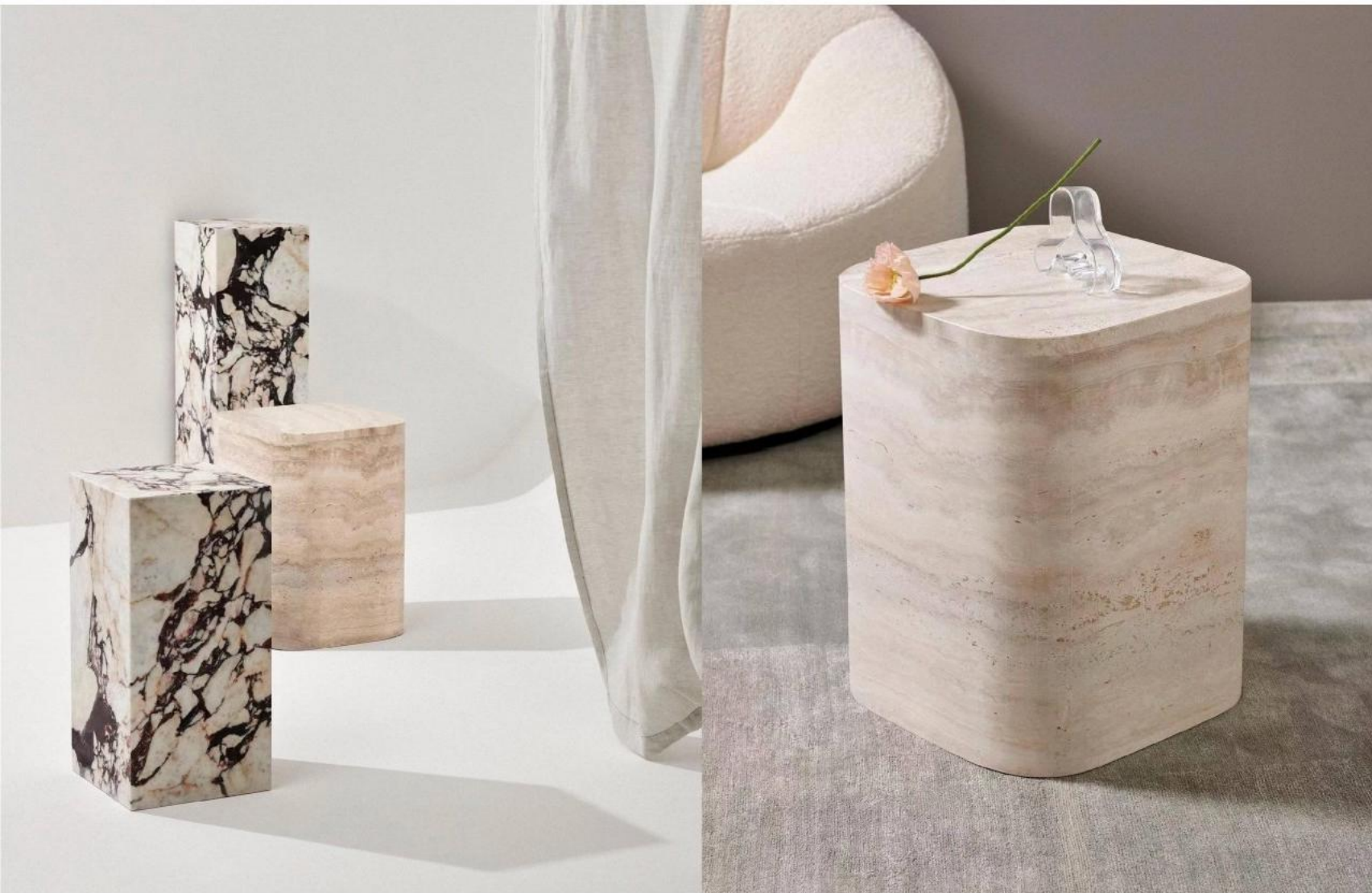
1mm(1600 mm\*3200mm)2.8kg/m<sup>2</sup> 3mm(2000mm\*3200mm)7.5kg/m<sup>2</sup> 5mm(2000mm\*3200mm)12kg/m<sup>2</sup>















# CONSTRUCTION PROCESS DESCRIPTION

Ultra thin marble can easily be used for both planar and curved modeling

The specific key points are as follows:

## (I) Construction Conditions

1. Whether the work surface is flat can be observed with the naked eye or with a level ruler;
2. The work surface must be secure to ensure the durability of the material being applied;
3. The work surface must be clean to enhance the adhesion strength and durability;
4. The construction temperature should generally reach above 10 degrees Celsius, and if the board is too hard, warm air heating can be used to make it more pliable.

## (II) Construction Preparation

1. Construction tools. Including circular saw cutters (or carpet knives, woodworking electric saws), adhesives, serrated scrapers, planing knives, tape measures, packaging tape, sandpaper (600 grit), etc.
2. Protective tools. When cutting and grinding ultra-thin marble, preventive measures must be taken. It is recommended to always use appropriate gloves, goggles (or safety glasses), and dust masks.

## (III) Construction Step One

Ultra-thin stone construction is relatively simple, as long as the base is level, the back is coated with structural adhesive, and then it can be fixed in place. The construction process is as follows: measuring → cutting → trimming → applying adhesive → construction → adjusting → completion. Due to the different materials used for the base, the key points that need attention vary:

1. Wooden base material. Use universal adhesive, apply glue to both the product back and the wooden base material, and wait for the glue to dry and not stick to the hand before bonding. After bonding, use wooden blocks and a hammer to knock out the air.
2. Cement walls. Use structural adhesive, apply glue to both the product back and the cement wall, especially around the edges of the product back.
3. Glass or acrylic base material. Use crystal glue to apply evenly.

## (III) Construction Step Two

4. Create an arc or cylinder. First, prepare the wooden base material, then adhere it with universal adhesive, and subsequently reinforce the corners with brads.
5. Leave a groove joint, apply glue, and use a metal strip for the groove. Generally, protective strips need to be preapplied around the edges of each ultra-thin marble slab to facilitate the grouting process between the ultra-thin stones. After the groove treatment is completed, the product is then adhered to prevent glue overflow onto the product. Finally, the interface is compacted and fixed again, and the construction is considered complete.
6. Application of surface varnish. After the product is adhered, use a brush or sponge to evenly apply the varnish on the product surface. The varnish is milky white before drying and becomes transparent once dry. Since the color of the product after varnishing will be deeper than before, it is recommended to do a small area test first to confirm the desired effect before proceeding with large-scale application.



# BRAND COOPERATION

 Company: [www.royalluxemarble.com](http://www.royalluxemarble.com)

 Telephone: +8613917882388

 Email: [CC@rlmarble.com](mailto:CC@rlmarble.com)

[HX@rlmarble.com](mailto:HX@rlmarble.com)

contact us